

**Modular Cooking Range Line
ECO 70 One Well Freestanding
Gas Fryer 15 liter**

ITEM # _____

MODEL # _____

NAME # _____

SIS # _____

AIA # _____



373070 (A7FRGD1GF0)

15-lt gas fryer free standing with 1 "V" shape well (external burners) and 1 basket

Short Form Specification

Item No. _____

To be installed on height adjustable feet in stainless steel. Two high efficiency 7 kW burners in stainless steel. Suitable for natural gas or LPG. Deep drawn V-shaped well. Oil drains through a tap into a container under the well. Exterior panels in stainless steel with Scotch Brite finish. One piece pressed work top in 1.5 mm thick stainless steel. Right-angled side edges to allow flush-fitting junction between units.

Main Features

- Unit to be mounted on 50mm height adjustable feet in stainless steel.
- Deep drawn V-Shaped well.
- Two high efficiency 7 kW burners in stainless steel with flame failure device attached to the outside of the well.
- Thermostatic regulation of oil temperature up to a maximum of 185 °C.
- Flame failure device on each burner.
- Overheat protection thermostat as standard on all units.
- Oil drains through a tap into a drainage container positioned under the well.
- All major compartments located in front of unit for ease of maintenance.
- Piezo spark ignition for added safety.
- Gas appliance supplied for use with natural or LPG gas, conversion jets supplied as standard.
- IPX 4 water protection.

Construction

- Interior of well with rounded corners for ease of cleaning.
- All exterior panels in Stainless Steel with Scotch Brite finishing.
- One piece pressed 1.5 mm work top in Stainless steel.
- Model has right-angled side edges to allow flush fitting joints between units, eliminating gaps and possible dirt traps.

Included Accessories

- 1 of Door for open base cupboard PNC 206343
- 1 of Full size basket for 14 and 15lt free standing fryers PNC 921691

Optional Accessories

- Junction sealing kit PNC 206086
- Draught diverter, 120 mm diameter PNC 206126
- Matching ring for flue condenser, 120 mm diameter PNC 206127
- Flanged feet kit PNC 206136
- Frontal kicking strip for concrete installation, 400mm PNC 206147
- Frontal kicking strip for concrete installation, 800mm PNC 206148
- Frontal kicking strip for concrete installation, 1000mm PNC 206150
- Frontal kicking strip for concrete installation, 1200mm PNC 206151

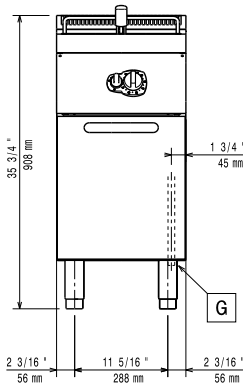
APPROVAL: _____

- | | | | |
|---|--|--|-------------------------------------|
| • Frontal kicking strip for concrete installation, 1600mm | PNC 206152
<input type="checkbox"/> | • REAR PANELING 1000MM | PNC 206375 <input type="checkbox"/> |
| • Frontal handrail 400 mm | PNC 206166
<input type="checkbox"/> | • Rear paneling - 1200mm (700/900 lines) | PNC 206376 <input type="checkbox"/> |
| • Frontal handrail 800 mm | PNC 206167
<input type="checkbox"/> | • Chimney grid net, 400mm | PNC 206400 <input type="checkbox"/> |
| • Frontal kicking strip, 400mm (not for refr-freezer base) | PNC 206175
<input type="checkbox"/> | • BASE SUPPORT FOR FEET/WHEELS 600M | PNC 206431 <input type="checkbox"/> |
| • Frontal kicking strip, 800mm (not for refr-freezer base) | PNC 206176
<input type="checkbox"/> | • Full size basket for 14 and 15lt free standing fryers | PNC 921691 <input type="checkbox"/> |
| • Frontal kicking strip, 1000mm (not for refr-freezer base) | PNC 206177
<input type="checkbox"/> | • 2 half size baskets for 12, 14 and 15lt fryers | PNC 921692 <input type="checkbox"/> |
| • Frontal kicking strip, 1200mm (not for refr-freezer base) | PNC 206178
<input type="checkbox"/> | • Filter for fryer oil collection basin for 7lt, 14lt, 15lt free standing fryers | PNC 921693 <input type="checkbox"/> |
| • Frontal kicking strip, 1600mm (not for refr-freezer base) | PNC 206179
<input type="checkbox"/> | • Unclogging rod for 15lt fryers drainage pipe | PNC 921695 <input type="checkbox"/> |
| • Large handrail (portioning shelf) 400 mm | PNC 206185
<input type="checkbox"/> | • Deflector for floured products for 15lt fryers | PNC 921696 <input type="checkbox"/> |
| • Large handrail (portioning shelf) 800 mm | PNC 206186
<input type="checkbox"/> | • Pressure regulator for gas units | PNC 927225 <input type="checkbox"/> |
| • Frontal handrail 1200 mm | PNC 206191
<input type="checkbox"/> | | |
| • Frontal handrail 1600 mm | PNC 206192
<input type="checkbox"/> | | |
| • Kit 4 feet for concrete installation (not for 900 line free standing grill) | PNC 206210
<input type="checkbox"/> | | |
| • Sediment tray for 15lt fryers | PNC 206235
<input type="checkbox"/> | | |
| • Right and left side handrails | PNC 206240
<input type="checkbox"/> | | |
| • Pair of side kicking strips | PNC 206249
<input type="checkbox"/> | | |
| • Pair of side kicking strips (concrete installation) | PNC 206265
<input type="checkbox"/> | | |
| • Oil drain pipe for 15lt freestanding fryer | PNC 206301
<input type="checkbox"/> | | |
| • Chimney upstand, 400mm | PNC 206303
<input type="checkbox"/> | | |
| • Flue condenser for 1/2 module, 120 mm diameter | PNC 206310
<input type="checkbox"/> | | |
| • 2 side covering panels, height 700 mm, depth 700 mm | PNC 206319
<input type="checkbox"/> | | |
| • Door for open base cupboard | PNC 206343
<input type="checkbox"/> | | |
| • Base support for feet or wheels - 400mm (700/900 lines) | PNC 206366
<input type="checkbox"/> | | |
| • Base support for feet or wheels - 800mm (700/900 lines) | PNC 206367
<input type="checkbox"/> | | |
| • Base support for feet or wheels - 1200mm (700/900 lines) | PNC 206368
<input type="checkbox"/> | | |
| • Base support for feet or wheels - 1600mm (700/900 lines) | PNC 206369
<input type="checkbox"/> | | |
| • Rear paneling - 600mm (700/900) | PNC 206373
<input type="checkbox"/> | | |
| • REAR PANELING 800MM | PNC 206374
<input type="checkbox"/> | | |

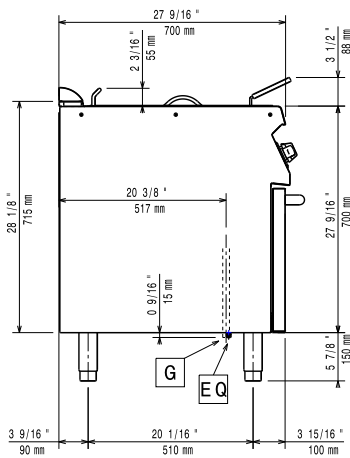


Modular Cooking Range Line ECO 70 One Well Freestanding Gas Fryer 15 liter

Front

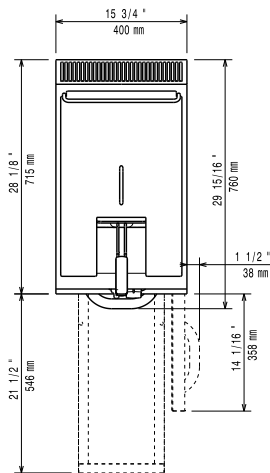


Side



EQ = Equipotential screw
G = Gas connection

Top



Gas

Gas Power:

373070 (A7FRGD1GF0) 47726 Btu/hr (14 kW)

Standard gas delivery:

Natural Gas G20 (20mbar)

Gas Type Option:

LPG; Natural Gas

Gas Inlet:

1/2"

Key Information

Usable well dimensions (width):	240 mm
Usable well dimensions (height):	505 mm
Usable well dimensions (depth):	380 mm
Well capacity:	13 lt MIN; 15 lt MAX
Thermostat Range:	105 °C MIN; 185 °C MAX
Shipping weight:	54 kg
Shipping height:	1140 mm
Shipping width:	460 mm
Shipping depth:	820 mm
Shipping volume:	0.43 m ³

If appliance is set up or next to or against temperature sensitive furniture or similar, a safety gap of approximately 150 mm should be maintained or some form of heat insulation fitted.