

Warewashing Undercounter Dishwasher for 600x400mm trays with Drain Pump & Detergent Dispenser

ITEM # _____

MODEL # _____

NAME # _____

SIS # _____

AIA # _____



400135 (NUCABG)

Undercounter dishwasher for 600x400 mm trays, double skin, atmospheric boiler, with drain pump and detergent dispenser, capacity 360 trays/h

Short Form Specification

Item No. _____

304 AISI stainless steel front and side panels, door and wash tank. Easily removable wash/rinse arms. 4 wash cycles 60/120/180/300 seconds. Washing system with rotating washing arms, high power wash pump, large capacity boiler and tank volume. Built-in atmospheric boiler (6 Kw) with rinse booster pump, 5,8-liter capacity for constant high rinse temperature (84°C). WRAS-certified air gap in water inlet circuit to avoid water being siphoned back into the network as a result of a sudden drop in main pressure. Electronic control panel with temperature display. Rinse aid dispenser, drain pump and detergent dispenser included. Suitable to wash 600x400mm trays and allows the use of standard 500x500mm baskets. Hourly capacity: 60 baskets.

Supplied with: n. 1 universal plastic basket for 500x500mm trays and n. 1 open rack for 400x600mm trays.

Main Features

- Built-in atmospheric boiler with rinse booster pump to provide constant water temperature and pressure for rinsing, independent from water inlet.
- Washing system endowed with rotating washing arms, high powered wash pump and large capacity boiler for professional washing.
- A pause of a few seconds after washing and before rinsing ensures that no drops of unclean water will fall on the clean items at the end of the rinsing cycle.
- Large washing chamber is suitable for both 500x500 mm standard baskets and 600x500 mm baskets to wash 600x400 mm trays.
- 60/120/180/300 seconds cycle.
- Electronic control panel with temperature display to easily operate and monitor machine status.
- Simple service from the front.
- Easy to remove wash/rinse arms.
- Equipped with drain pump for easy and quick installation without opening the machine.
- Low noise level.

Construction

- Front and side panels, door and wash tank made in heavy duty anti-corrosive AISI 304 stainless steel.
- Unit to feature smooth surfaces to facilitate cleaning.
- Completely closed on the back by a cover plate.
- Unit to feature rinse aid and detergent dispenser pumps.
- Double skinned construction.
- IPX3 protected.

Included Accessories

- 1 of Universal plastic basket 500x500x105 PNC 867026 mm for undercounter dishwashers for pastry trays
- 1 of Open rack for 400x600 mm trays for undercounter dishwashers for pastry trays PNC 867028

Optional Accessories

- Stand for undercounter dishwashers for pastry trays PNC 860002
- Detergent rinse aid probe for undercounter dishwashers for pastry trays PNC 860003
- External manual water softener - 12 lt PNC 860412
- External automatic water softener - 8 lt PNC 860413
- External manual water softener - 20 lt PNC 860430
- Filter for partial demineralization PNC 864017
- Kit to measure total and partial water hardness PNC 864050

APPROVAL: _____

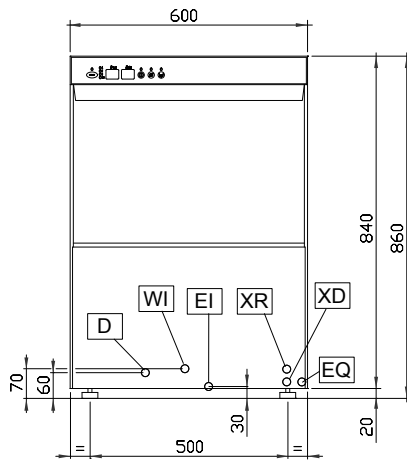


Warewashing Undercounter Dishwasher for 600x400mm trays with Drain Pump & Detergent Dispenser

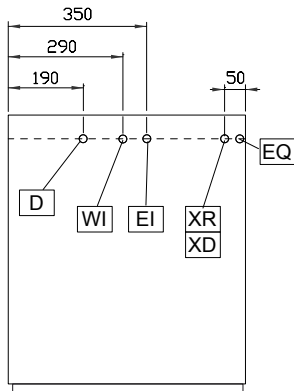
- Yellow cutlery container PNC 864242
- Filter for total demineralization PNC 864367
- Reverse osmosis filter for single tank dishwasher with atmosphere boiler PNC 864388
- Pressure reducer for single tank dishwasher PNC 864461
- Kit 4 plastic boxes for cutlery - yellow PNC 865574
- Basket for 12 soup bowls - green PNC 867000
- Basket for 18 dinner plates - yellow PNC 867002
- Basket for 5 trays 530x325 mm - red, for undercounter (top level), utensil dishwashers, hood type, rack type PNC 867006
- Basket for 48 small cups or 24 cups - blue PNC 867007
- Wire basket for 12 plates up to 320 mm PNC 867014
- Cover grid for small/light items in rack PNC 867016
- Basket for 16 vertical glasses (h 70 mm - diam 100 mm) - blue PNC 867023
- Open rack for 400x600 mm trays for undercounter dishwashers for pastry trays PNC 867028



Front

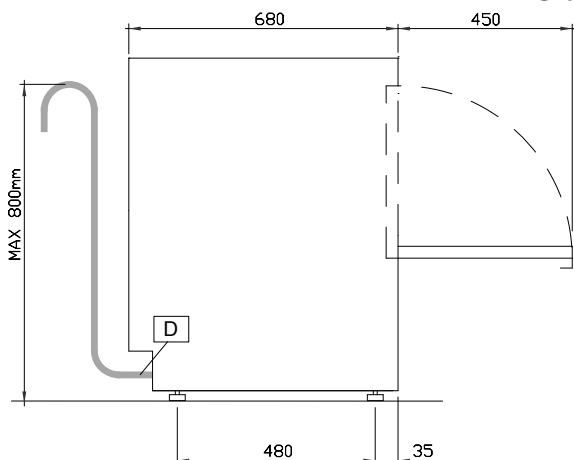


Top



- | | |
|-----------------------------------|----------------------------------|
| CW11 = Cold Water inlet | WI = Water inlet |
| D = Drain | XD = Detergent connection |
| EI = Electrical connection | XR = Rinse aid connection |
| EO = Electrical Outlet | |
| HWI = Hot water inlet | |
| V = Air vents | |

Side



Electric

Supply voltage:

400135 (NUCABG) 400 V/3N ph/50 Hz
230 V / 1+N / 50 Hz;

Convertible to:

Total Watts: 6.65 kW

Tank heating elements: 2.7 kW

Washing cycle pump power: 0.65 kW

Water

Pressure, bar min/max: 2-4 bar

Water supply temperature: 10-55 °C

Drain line size: 24mm

Inlet Water supply pressure: 2-4 bar

Water consumption per cycle (lt): 2.3

Boiler Capacity (lt): 5.8

Tank Capacity (lt): 16.5

Washing cycle tank capacity (lt): 16.5

Washing cycle electrical elements: 2.7 kW

Hot rinse cycle water consumption (lt): 2.3

Key Information

Baskets per hour: 60

N° of working cycles - sec.: 4 (60/120/180/300)

Cell dimensions - width 500 mm

Cell dimensions - depth 600 mm

Cell dimensions - height 400 mm

Dishes per hour: 1080

Wash temperature (MIN): 55-65°C

Rinse temperature (MIN): 85 °C

External dimensions, Width 600 mm

External dimensions, Height 860 mm

External dimensions, Depth 680 mm

Noise level: 61,3 dBA

Washing cycle temperature: 55-65 °C