

Warewashing Undercounter Dishwasher for 600x400mm trays with Drain Pump, Detergent Dispenser & Water Softener

ITEM # _____

MODEL # _____

NAME # _____

SIS # _____

AIA # _____



400136 (NUCABWSG)

Undercounter dishwasher for 600x400 mm trays, double skin, atmospheric boiler, drain pump, detergent dispenser and water softener, capacity 360 trays/h

Short Form Specification

Item No. _____

304 AISI stainless steel front and side panels, door and wash tank. Easily removable wash/rinse arms. 4 wash cycles 60/120/180/300 seconds. Washing system with rotating washing arms, high power wash pump, large capacity boiler and tank volume. Built-in atmospheric boiler (6 Kw) with rinse booster pump, 5.8-liter capacity for constant high rinse temperature (84°C). WRAS-certified air gap in water inlet circuit to avoid water being siphoned back into the network as a result of a sudden drop in main pressure. Electronic control panel with temperature display. Rinse aid and detergent dispenser, drain pump and water softener included. Suitable to wash 600x400mm trays and allows the use of standard 500x500mm baskets. Hourly capacity: 60 baskets.

Supplied with: n. 1 universal plastic basket for 500x500mm trays and n. 1 open rack for 400x600mm trays.

Main Features

- Built-in atmospheric boiler with rinse booster pump to provide constant water temperature and pressure for rinsing, independent from water inlet.
- Washing system endowed with rotating washing arms, high powered wash pump and large capacity boiler for professional washing.
- A pause of a few seconds after washing and before rinsing ensures that no drops of unclean water will fall on the clean items at the end of the rinsing cycle.
- Large washing chamber is suitable for both 500x500 mm standard baskets and 600x500 mm baskets to wash 600x400 mm trays.
- 60/120/180/300 seconds cycle.
- Electronic control panel with temperature display to easily operate and monitor machine status.
- Simple service from the front.
- Easy to remove wash/rinse arms.
- Equipped with drain pump for easy and quick installation without opening the machine.
- Equipped with water softener to ensure optimal rinsing results.
- Low noise level.

Construction

- Front and side panels, door and wash tank made in heavy duty anti-corrosive AISI 304 stainless steel.
- Unit to feature smooth surfaces to facilitate cleaning.
- Completely closed on the back by a cover plate.
- Unit to feature rinse aid and detergent dispenser pumps.
- IPX3 protected.
- Double skinned construction.

Included Accessories

- 1 of Universal plastic basket 500x500x105 PNC 867026 mm for undercounter dishwashers for pastry trays
- 1 of Open rack for 400x600 mm trays for PNC 867028 undercounter dishwashers for pastry trays

Optional Accessories

- Stand for undercounter dishwashers for PNC 860002
pastry trays
- Detergent rinse aid probe for undercounter PNC 860003
dishwashers for pastry trays
- Kit to measure total and partial water PNC 864050
hardness
- Yellow cutlery container PNC 864242
- Pressure reducer for single tank PNC 864461
dishwasher
- Kit 4 plastic boxes for cutlery - yellow PNC 865574
- Basket for 12 soup bowls - green PNC 867000
- Basket for 18 dinner plates - yellow PNC 867002

APPROVAL: _____



Warewashing Undercounter Dishwasher for 600x400mm trays with Drain Pump, Detergent Dispenser & Water Softener

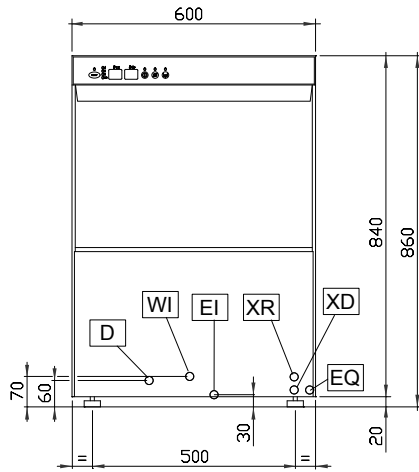
- Basket for 5 trays 530x325 mm - red, for undercounter (top level), utensil dishwashers, hood type, rack type PNC 867006
- Basket for 48 small cups or 24 cups - blue PNC 867007
- Wire basket for 12 plates up to 320 mm PNC 867014
- Cover grid for small/light items in rack PNC 867016
- Basket for 16 vertical glasses (h 70 mm - diam 100 mm) - blue PNC 867023
- Open rack for 400x600 mm trays for undercounter dishwashers for pastry trays PNC 867028



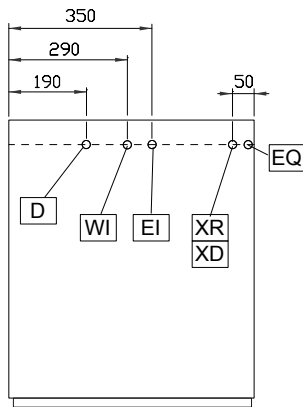
Warewashing
Undercounter Dishwasher for 600x400mm trays with Drain Pump,
Detergent Dispenser & Water Softener
The company reserves the right to make modifications to the products
without prior notice. All information correct at time of printing.

2018.06.14

Front

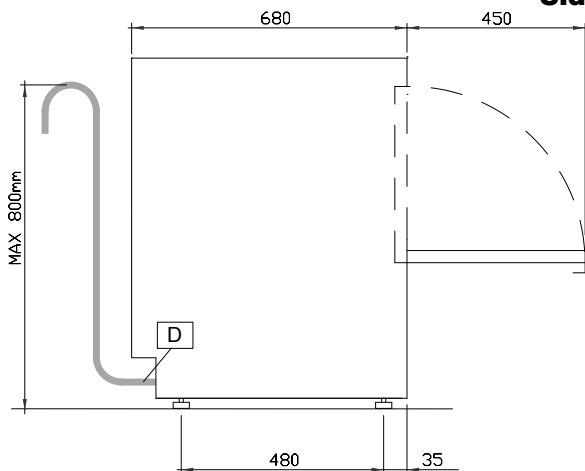


Top



- | | |
|-----------------------------------|----------------------------------|
| CW11 = Cold Water inlet | WI = Water inlet |
| D = Drain | XD = Detergent connection |
| EI = Electrical connection | XR = Rinse aid connection |
| EO = Electrical Outlet | |
| HWI = Hot water inlet | |
| V = Air vents | |

Side



Electric

Supply voltage:

400136 (NUCABWSG) 400 V/3N ph/50 Hz
230 V / 1+N / 50 Hz;

Convertible to:

Total Watts: 6.65 kW
Tank heating elements: 2.7 kW
Washing cycle pump power: 0.65 kW

Water

Pressure, bar min/max: 2-4 bar
Water supply temperature: 10-55 °C
Drain line size: 24mm
Inlet Water supply pressure: 2-4 bar
Water consumption per cycle (lt): 2.3
Boiler Capacity (lt): 5.8
Tank Capacity (lt): 16.5
Washing cycle tank capacity (lt): 16.5
Washing cycle electrical elements: 2.7 kW
Hot rinse cycle water consumption (lt): 2.3

Key Information

Baskets per hour: 60
N° of working cycles - sec.: 4 (60/120/180/300)
Cell dimensions - width: 500 mm
Cell dimensions - depth: 600 mm
Cell dimensions - height: 400 mm
Dishes per hour: 1080
Wash temperature (MIN): 55-65°C
Rinse temperature (MIN): 85 °C
External dimensions, Width: 600 mm
External dimensions, Height: 860 mm
External dimensions, Depth: 680 mm
Noise level: 61,3 dBA
Washing cycle temperature: 55-65 °C