

Roll-in 1 Door Refrigerator, 750lt (0/+10) - Remote

ITEM # _____

MODEL # _____

NAME # _____

SIS # _____

AIA # _____



726652 (RI075R1FR)

1-door roll-in refrigerator, 750
lt, 0+10°C, remote, AISI 304

Short Form Specification

Item No. _____

External and internal in AISI 304 stainless steel. Insulation thickness 60mm. Right hinged full door with lock. Bottom door gasket adjustable. Pre-arranged for remote refrigeration unit (non included); ventilated operating mode; digital control; evaporator; automatic defrost; external digital temperature display; high/low humidity switch. Operating temperature 0+10°C. For ambient temperatures up to 43° C. CFC and HCFC free. R134a gas in refrigeration circuit. Gas in foam: Cyclopentane.

Main Features

- Excellent space optimisation thanks to the compact dimensions (footprint 0.56m²).
- One full door.
- The operating temperature can be adjusted from 0 to+ 10 °C to suit both meat and dairy storage requirements.
- Simple control panel: on/off switch, high/low humidity switch and digital temperature display.
- Automatic defrost and automatic evaporation of defrost water.
- Ventilated cooling for optimal temperature distribution.
- Inner side protectors to protect the internal walls.
- Suitable for all kinds of 18 shelves GN 1/1 trolleys, designed to fit the 18 shelves GN 2/1 trolley available as optional accessory.
- Adjustable bottom door gasket.
- Lift-up control panel to better access main components.

Construction

- Remote compressor to suit operating conditions.
- Interior cell and external panel are constructed in 304 AISI stainless steel.
- Bottom panel with rounded internal corners avoids dirt traps.
- Refrigerant type: R134a.
- Developed and produced in ISO 9001 and ISO 14001 certified factory.
- Cabinet fitted with up to 60 mm thickness of Cyclopentane insulation for best insulating performance (thermal conductivity: 0,020 W/m*K). CFC and HCFC-free insulation.

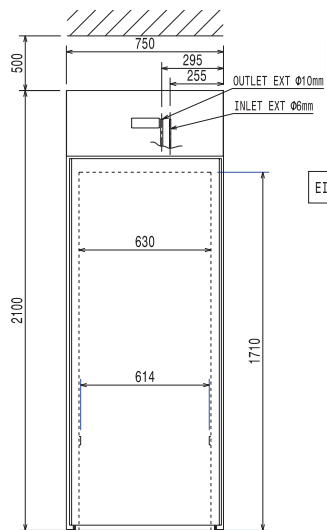
Optional Accessories

- Trolley 18x2/1GN for roll-in 750lt PNC 881521

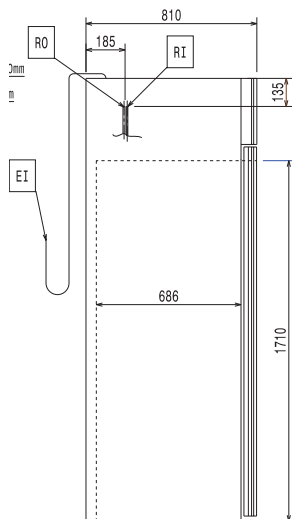
APPROVAL: _____

Roll-in 1 Door Refrigerator, 750lt (0/+10) - Remote

Front

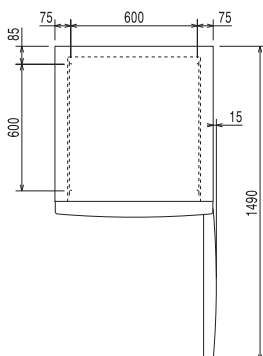


Side



EI = Electrical connection
RI = Refrigerant Inlet
RO = Refrigerant Outlet

Top



Electric

Supply voltage:
726652 (RI075R1FR) 230 V/1 ph/50 Hz
Electrical power, max: 0.14 kW

Key Information

Gross capacity 750 lt
N° of doors: 1
Door hinges: Right Side
External dimensions, Width 750 mm
External dimensions, Height 2100 mm
External dimensions, Depth 810 mm
Type of external material: 304 AISI
Type of internal material: 304 AISI
External side panels: 304 AISI
External top panels: Galvanized Steel
External door material: 304 AISI
Internal panels material: 304 AISI
Internal side panels material 304 AISI
Remote Compressor and Refrigeration Unit

Refrigeration Data

Control type: Digital
Refrigerant type: R134a
Refrigeration power at evaporation temperature: -10 °C
Min/Max internal humidity 70/80
Operating temperature min.: 0 °C
Operating temperature max.: 10 °C
Operating mode Ventilated
Defrost type Electric

Roll-in
1 Door Refrigerator, 750lt (0/+10) - Remote

The company reserves the right to make modifications to the products without prior notice. All information correct at time of printing.