

Roll-in 2 Door Hot Cupboard, 1600lt (+50/+75) - Pass-through

ITEM # _____

MODEL # _____

NAME # _____

SIS # _____

AIA # _____



729170 (ARI16H2FT)

Roll-in pass-through hot
cupboard 2 doors
1600lt, +50/+75°C, AISI 304

Short Form Specification

Item No. _____

External and internal in AISI 304 stainless steel. Body insulation thickness 72mm. N. 2 full doors (pass-through). Ventilated operating mode; digital control; external digital temperature display. Operating temperature +50/+75°C.

Main Features

- Certified safety CE requirements.
- Two full doors.
- Adjustable temperature range from -2 °C to +10 °C to suit meat, fish and dairy storage requirements.
- The operating temperature can be adjusted from 50 to 75 °C to suit both meat and dairy storage requirements.
- Simple control panel: on/off switch and digital temperature display.
- Large digital white-digit display with humidity selection button (3 preset level), internal temperature display and setting, manual activation of defrost cycle and turbo frost cycle (to rapidly cool warm loads).
- Universal shock-protectors on all sides.
- Equipped with Optiflow forced air circulation system for rapid cooling and temperature distribution within the cell.
- Tropicalized unit (43°C ambient temperature).
- Fitted with 90 mm thickness of cyclopentane insulation for best insulating performance (thermal conductivity: 0,020 W/m*K) and lowest environmental impact (GWP=3).
- 0mm clearance installation space: tower configuration cooling unit guarantee performance with frontal ventilation only; this unique solution allows installation against the wall or side by side with other appliances, even on the cooling unit side to maximize the use of kitchen space.
- Frost Watch Control starts automatically the defrosting process only when needed and ends once ice is melted, improving energy efficiency results.
- Combination of doors and drawers to suit any configuration needed, with the possibility to change the configuration on site. Right cooling unit available on request.
- Fully compliant HACCP digital control: when temperature exceeds critical limits, acoustic and visual alarms are activated. Up to two months of event are kept in memory.
- Anti-tilt runners accept GN 1/1 containers.
- Self closing stainless steel doors (< 90°).
- Prearranged to fit RS485 port to facilitate connection to a remote computer and integrated HACCP systems.
- Hydrocarbon refrigerant gas R290 for the lowest environmental impact (GWP=3) - CFC and HCFC free.

Construction

- Interior cell is entirely constructed in 304 AISI stainless steel.
- Exterior finish in AISI 304 stainless steel for easy cleaning.
- 72 mm thick insulation with cyclopentane injection for long-term insulation and energy saving.
- Developed and produced in ISO 9001 and ISO 14001 certified factory.

APPROVAL: _____

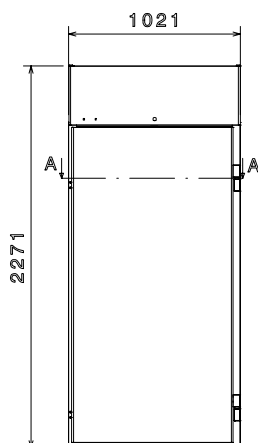
- Interior base with rounded corners, pressed from a single sheet.
- Ease of cleaning and high hygiene standards thanks to the rounded internal corners, the easily removable runners, grids and air conveyors.
- Internal structure with 15 charging positions (3 cm pitch) available to host GN 1/1 grids, ensuring higher net capacity and a greater storage space.
- Removable triple-chamber balloon magnetic gasket to improve insulation and reduce energy consumption and ease of cleaning.
- Internal structure with numerous charging positions available to host grids, ensuring higher net capacity and a greater storage space.
- Internal and external doors, front and side panels and removable worktop in AISI 304 Stainless steel.
- External bottom panel in stainless steel.
- External back panel in galvanized steel.
- Fault code display.

Optional Accessories

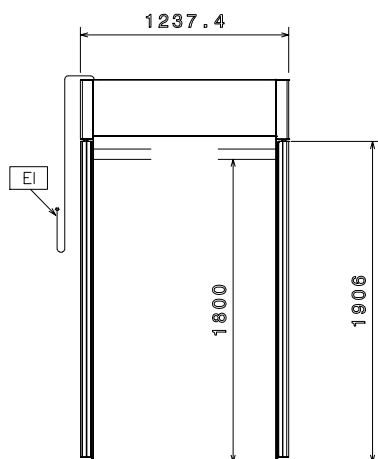
- | | |
|--|-------------------------------------|
| • 17x2/1GN container trolley | PNC 361258 <input type="checkbox"/> |
| • 17x2/1GN compact container trolley | PNC 361260 <input type="checkbox"/> |
| • Trolley for 2/1GN roll-in rack | PNC 880017 <input type="checkbox"/> |
| • Base for roll-in-rack | PNC 880018 <input type="checkbox"/> |
| • Kit with 2 hinges for door reversibility | PNC 881432 <input type="checkbox"/> |
| • 2/1GN roll-in rack | PNC 881449 <input type="checkbox"/> |
| • Banquet trolley with rack holding 92 plates for 20 GN 2/1 oven and blast chiller freezer, 85mm pitch | PNC 922055 <input type="checkbox"/> |



Front

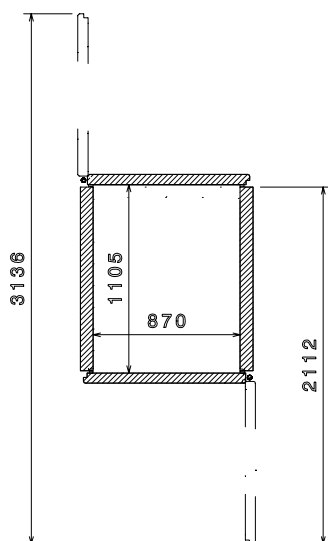


Side



EI = Electrical inlet (power)
RI = Refrigerant Inlet
RO = Refrigerant Outlet

Top



Electric

Supply voltage:	729170 (ARI16H2FT)	400 V/3N ph/50 Hz
Electrical power max.:		1.91 kW
Defrost Power:		
Current consumption:		2.8 Amps
Plug type:		
Energy consumption (min,default):		3.88 - 0 kW/h

Key Information:

Gross capacity:	1630 lt
Net Volume:	1600 lt
Door hinges:	
External dimensions, Width:	1021 mm
External dimensions, Height:	2271 mm
External dimensions, Depth:	1238 mm
Number and type of doors:	
Internal Dimensions (depth):	1106 mm
Internal Dimensions (height):	1800 mm
Internal Dimensions (width):	870 mm
Net weight:	200 kg
Shipping volume:	3.48 m ³
Height adjustment:	0/0 mm
Number and type of grids (included):	

Refrigeration Data

Control type:	Digital
Compressor power:	
Refrigerant type:	
GWP Index:	
Refrigeration power:	
Refrigeration power at evaporation temperature:	0 °C
Refrigerant weight:	
Min/Max internal humidity:	
Operating temperature min.:	50 °C
Operating temperature max.:	75 °C
Operating mode:	Ventilated

Product Information (EU Regulation 2015/1094)

Energy Class:
Yearly and daily energy consumption:
Climate class:
Energy Efficiency Index (EEI):