

## Roll-in 2 Door Refrigerator, 2700lt (+2/+10)

ITEM # \_\_\_\_\_

MODEL # \_\_\_\_\_

NAME # \_\_\_\_\_

SIS # \_\_\_\_\_

AIA # \_\_\_\_\_



729179 (EDVP20VR1)

2-door roll-in refrigerator  
2700lt, +2/+10°C, AISI 304

### Short Form Specification

**Item No.** \_\_\_\_\_

External and internal in AISI 304 stainless steel. Body insulation thickness 75mm. N. 2 full doors. Built-in refrigeration unit; ventilated operating mode; digital control; evaporator; automatic defrost; external digital temperature display. Operating temperature +2/+10°C. For ambient temperatures up to 43°C. CFC and HCFC free. R134a gas in refrigeration circuit. Gas in foam: Cyclopentane.

### Main Features

- Certified safety CE requirements.
- Two full doors.
- Adjustable temperature range from -2 °C to +10 °C to suit meat, fish and dairy storage requirements.
- The operating temperature can be adjusted from +2 to +10°C to suit both meat and dairy storage requirements.
- Simple control panel: on/off switch, high/low humidity switch and digital temperature display.
- Large digital white-digit display with humidity selection button (3 preset level), internal temperature display and setting, manual activation of defrost cycle and turbo frost cycle (to rapidly cool warm loads).
- Automatic defrost and automatic evaporation of defrost water.
- Equipped with Optiflow forced air circulation system for rapid cooling and temperature distribution within the cell.
- Ventilated cooling for optimal temperature distribution.
- Tropicalized unit (43°C ambient temperature).
- Simple cooling unit easily accessible from the rear of the appliance.
- Fitted with 90 mm thickness of cyclopentane insulation for best insulating performance (thermal conductivity: 0,020 W/m\*K) and lowest environmental impact (GWP=3).
- Universal shock-protectors on all sides.
- 0mm clearance installation space: tower configuration cooling unit guarantee performance with frontal ventilation only; this unique solution allows installation against the wall or side by side with other appliances, even on the cooling unit side to maximize the use of kitchen space.
- Frost Watch Control starts automatically the defrosting process only when needed and ends once ice is melted, improving energy efficiency results.
- Combination of doors and drawers to suit any configuration needed, with the possibility to change the configuration on site. Right cooling unit available on request.
- Fully compliant HACCP digital control: when temperature exceeds critical limits, acoustic and visual alarms are activated. Up to two months of event are kept in memory.
- Anti-tilt runners accept GN 1/1 containers.
- Self closing stainless steel doors (< 90°).
- Prearranged to fit RS485 port to facilitate connection to a remote computer and integrated HACCP systems.
- Hydrocarbon refrigerant gas R290 for the lowest environmental impact (GWP=3) - CFC and HCFC free.

### Construction

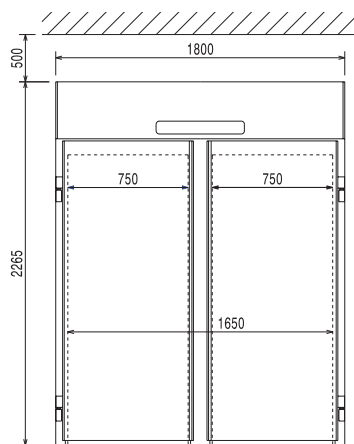
- Interior base with rounded corners, pressed from a single sheet.

APPROVAL: \_\_\_\_\_

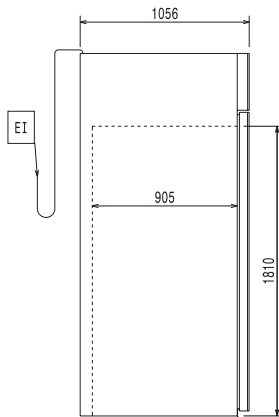
- Ease of cleaning and high hygiene standards thanks to the rounded internal corners, the easily removable runners, grids and air conveyors.
- Internal structure with 15 charging positions (3 cm pitch) available to host GN 1/1 grids, ensuring higher net capacity and a greater storage space.
- Built-in compressor to suit operating conditions.
- Interior cell and external panel are constructed in 304 AISI stainless steel.
- 75 mm thick insulation, with cyclopentane injection for long-term insulation and energy saving.
- CFC and HCFC-free insulation.
- Refrigerant type: R134a.
- Removable triple-chamber balloon magnetic gasket to improve insulation and reduce energy consumption and ease of cleaning.
- Internal structure with numerous charging positions available to host grids, ensuring higher net capacity and a greater storage space.
- Internal and external doors, front and side panels and removable worktop in AISI 304 Stainless steel.
- External bottom panel in stainless steel.
- External back panel in galvanized steel.
- Developed and produced in ISO 9001 and ISO 14001 certified factory.
- Fault code display.

### Optional Accessories

- |                                          |                                     |
|------------------------------------------|-------------------------------------|
| • 17x2/1GN container trolley             | PNC 361258 <input type="checkbox"/> |
| • 17x2/1GN compact container trolley     | PNC 361260 <input type="checkbox"/> |
| • Trolley for 2/1GN roll-in rack         | PNC 880017 <input type="checkbox"/> |
| • Base for roll-in-rack                  | PNC 880018 <input type="checkbox"/> |
| • 2/1GN roll-in rack                     | PNC 881449 <input type="checkbox"/> |
| • Trolley for 20 2/1 GN roll-in rack     | PNC 922134 <input type="checkbox"/> |
| • Base for 20 2/1 GN roll-in rack        | PNC 922142 <input type="checkbox"/> |
| • 60-mm pitch roll-in rack for 20 2/1 GN | PNC 922204 <input type="checkbox"/> |
| • 80-mm pitch roll-in rack for 14 2/1 GN | PNC 922206 <input type="checkbox"/> |

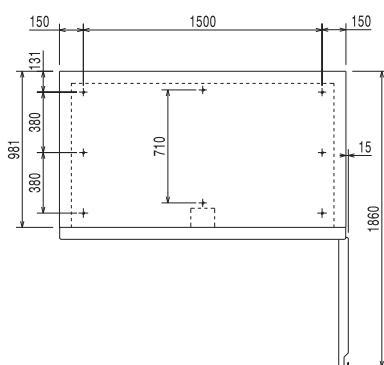


**Front**



**Side**

**EI** = Electrical inlet (power)  
**RI** = Refrigerant Inlet  
**RO** = Refrigerant Outlet



**Top**

### Electric

<b>Supply voltage:</b>	729179 (EDVP20VR1)	230 V/1 ph/50 Hz
<b>Electrical power max.:</b>		0.948 kW
<b>Defrost Power:</b>		1.2 kW
<b>Current consumption:</b>		7.3 Amps
<b>Plug type:</b>		CE-SCHUKO
<b>Energy consumption (min,default):</b>		0 - 0 kW/h

### Key Information:

<b>Gross capacity:</b>	2700 lt
<b>Net Volume:</b>	
<b>Door hinges:</b>	
<b>External dimensions, Width:</b>	1800 mm
<b>External dimensions, Height:</b>	2265 mm
<b>External dimensions, Depth:</b>	1056 mm
<b>Number and type of doors:</b>	2 Full
<b>Internal Dimensions (depth):</b>	900 mm
<b>Internal Dimensions (height):</b>	1815 mm
<b>Internal Dimensions (width):</b>	1650 mm
<b>Net weight:</b>	350 kg
<b>Shipping volume:</b>	5.26 m <sup>3</sup>
<b>Height adjustment:</b>	0/0 mm
<b>Number and type of grids (included):</b>	

### Refrigeration Data

<b>Control type:</b>	Digital
<b>Compressor power:</b>	1 hp
<b>Refrigerant type:</b>	R134a
<b>GWP Index:</b>	1430
<b>Refrigeration power:</b>	1104 W
<b>Refrigeration power at evaporation temperature:</b>	-10 °C
<b>Refrigerant weight:</b>	460 g
<b>Min/Max internal humidity:</b>	75/90
<b>Operating temperature min.:</b>	2 °C
<b>Operating temperature max.:</b>	10 °C
<b>Operating mode:</b>	Ventilated

### Product Information (EU Regulation 2015/1094)

**Energy Class:**  
**Yearly and daily energy consumption:**  
**Climate class:**  
**Energy Efficiency Index (EEI):**